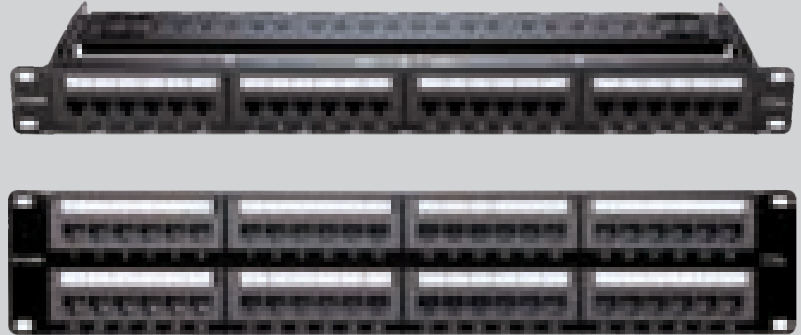


Cat 5e UTP Loaded Patch Panel

D-Link Category 5e patch panels are six port RJ45 modules applied and suitable for 22-26AWG stranded and solid wire, compatible with both 110 & Krone punch down tools. D-Link Cat5e patch panels have improved Cable Management with optional Cable Management bar terminating 4 pairs UTP cable. They are complied with the ANSI/TIA/EIA-568-C.2 standard.



SPECIFICATIONS

ID plate:	PVC, transparent color with paper
Panel:	SPCC, 1.5mm thickness with black color painted
RJ45 Jack:	Housing: ABS, UL 94V-0 Contact Brackets: PC, UL 94V-2, transparent color
RJ45 Jack contact:	Material-phosphor bronze with nickel plated Finish: 50 micro-inches Gold plated on plug contact area
IDC:	Housing – PC + glass fiber, UL 94V-2 Terminal: phosphor bronze with tin plated
Jack Bracket Set:	ABS, UL 94V-0
Support Bar:	SPCC, 1.5 mm thickness with black color painted

ORDERING INFORMATION

CAT5E Jack Panel	
Part Code	Description
NPP-5E1BLK241	Cat5E UTP 24 Port Loaded Patch Panel
NPP-5E1BLK481	Cat5E UTP 48 Port Loaded Patch Panel



D-Link (India) Limited
Kalpataru Square, 2nd Floor, Kondivita Lane, Andheri-East, Mumbai-400059
Specifications are subject to change without notice.
D-Link is a registered trademark of D-Link Corporation and its overseas subsidiaries.
All other trademarks belong to their respective owners.
©2010 D-Link Corporation. All rights reserved. Release 01 (May 2010)