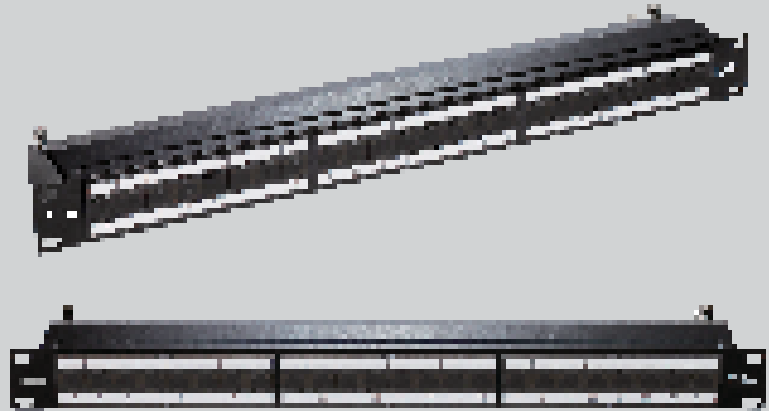




Cat5E STP Loaded Patch Panel

The shielded Cat5e patch panel is eight ports RJ-45 modules applied and suitable for 22-26 AWG stranded and solid wire, compatible with 110 & Krone punch down tools. This type of panel is highly recommended for use in areas where horizontal cabling is in proximity to electrical facilities that generate high levels of electromagnetic interference. The high performance, high density connectors complied with ANSI/TIA/EIA 568B.2 standard.



SPECIFICATIONS

- Panel: **SECC, 1.2mm thickness with black color painted**
- RJ45 Jack Housing: **PBT + 15%GF, UL 94V-0**
- RJ45 Jack Shield: **Bronze with nickel plated**
- RJ45 Jack Contact – Material: **Phosphor bronze**
Finish: **Mn 3mm 50 micro-inches Gold plated over nickel plated**
- IDC Housing: **PC+5% glass fiber, UL 94V-2**
- IDC Terminal material & finishing: **Phosphor bronze with min 50 micro-inch tin plated Krone tool only.**
- Jack Bracket Set: **ABS+ PC, UL 94V-0, black color**
- Dust Cover: **PC, UL 94V-0 transparent black color**
- Name Plate: **PVC, transparent color**
- Ground wire: **18 AWG wire, with Green/Yellow striped color, length 40 cm**

ORDERING INFORMATION

Part Code	Description
NPP-5E2BLK241	Cat5E STP 24Port Loaded Patch Panel
NPP-5E2BLK481	Cat5E STP 48Port Loaded Patch Panel



D-Link (India) Limited
 Kalpataru Square, 2nd Floor, Kondivita Lane, Andheri-East, Mumbai-400059
 Specifications are subject to change without notice.
 D-Link is a registered trademark of D-Link Corporation and its overseas subsidiaries.
 All other trademarks belong to their respective owners.
 ©2010 D-Link Corporation. All rights reserved. Release 01 (May 2010)